

# FORMAX®

## Pressure Seal Solutions

## Mailing Solutions

## Data Destruction Solutions

## Digital Print & Finishing Solutions

AutoSeal® Pressure Sealers	1
Production Pressure Sealers	2
Inserters & MailDoc Software	3 & 4
Document Folders	5 & 6
ColorMax7 Digital Color Printer & Software	7
Cut-True Guillotine Cutters	8
Card Cutters	9
Creasers	9
Document Signers	10
Cut-Sheet Bursters & Cutters	10
Joggers	11
Tabbing Systems	12
Envelope Openers	12
Booklet Makers	13
Continuous Form Bursters	13
Commercial-Grade Shredders	14

# PRESSURE SEALERS – TABLETOP

Online Demos at [www.formax.com](http://www.formax.com)

Formax AutoSeal® Pressure Sealers transform pressure-sensitive one-piece mailers into secure, sealed mail-ready pieces. Various models are available for specific needs including: Low, Medium and High-Volume Tabletop, In-Line, Stand-Alone, & High-Volume Production.



## FD 1200 Low-Volume

Hopper Capacity:	Up to 75 forms 24#
Fixed Speed:	Up to 35 forms per minute, based on 11" Z-fold
Duty Cycle:	Up to 10,000 per month
Paper Size:	Up to 8.5" W x 14" L
Features:	Drop-in feed system, compact tabletop design, 14" form length



## FD 1400 / FD 1500 Low-Volume

	FD 1400	FD 1500
Hopper Capacity:	Up to 100 forms 24#	Up to 150 forms 24#
Fixed Speed:	Up to 60 forms per minute, based on 11" Z-fold	Up to 85 forms per minute, based on 11" Z-fold
Duty Cycle:	Up to 15,000 per month	Up to 20,000 per month
Paper Size:	Up to 8.5" W x 14" L	Up to 8.5" W x 14" L
Features:	Drop-in feed system, compact tabletop design, 14" form length, LED indicator, static eliminator	Drop-in feed system, 14" form length, six-digit counter, uneven custom folds, extended fold plate for uneven "C" folds, LED indicator, static eliminator
Options:	Cabinet, 18" conveyor, reverse stacking conveyor, 402 Series Jogger	



## FD 1500 Plus Low-Volume with Integrated Conveyor

Hopper Capacity:	Up to 150 forms 24#
Fixed Speed:	Up to 5,200 per hour
Duty Cycle:	Up to 20,000 per month
Paper Size:	Up to 8.5" W x 14" L
Features:	Integrated conveyor, drop-in feed system, 14" form length, counter, uneven custom folds, LED indicator
Options:	Cabinet, 402 Series Jogger



Shown w/optional 18" conveyor

## FD 2002 / FD 2032 Mid-Volume

	FD 2002	FD 2032
Hopper Capacity:	Up to 250 forms 24#	Up to 350 forms 24#
Fixed Speed:	Up to 8,000 forms per hour	Up to 11,000 forms per hour
Duty Cycle:	Up to 50,000 per month	Up to 100,000 per month
Paper Size:	Up to 8.5" W x 14" L	Up to 8.5" W x 14" L
Features:	Drop-in feed system, 14" form length, uneven custom folds, six-digit counter, LED indicators, noise reduction	
Options:	Cabinet, 18" conveyor, reverse stacking conveyor, 402 Series Jogger	



## FD 2054 High-Volume with Automatic Fold & Form Length Settings

Hopper Capacity:	Up to 500 forms 20#
Variable Speed:	Up to 16,450 forms per hour, based on 11" Z-fold
Duty Cycle:	Up to 200,000 per month
Paper Size:	Up to 12.25" W x 18" L
Features:	Large LCD control panel, integrated telescoping conveyor, 11 automatic fold settings, stores up to 35 custom folds, AutoStack™ wheels, 17" form capability, automatic paper length settings, drop-in feed system, six-digit addition and batch counter, removable roller cover, easy-off feed wheel shaft, adjustable feed table pressure, standard fold setting customization



FD 2000IL shown w/optional cabinet (printer not included)

## FD 2000IL In-Line with Laser Printer

FD 2000IL System	
Hopper Capacity:	Printer Dependent
Speed:	Printer Dependent
Duty Cycle:	Up to 50,000 per month
Paper Size:	Up to 8.5" W x 14" L
Features:	Print, fold & seal in one step, enclosed paper path for document security, automatic fold settings, six-digit counter, easy to install, 11" & 14" form length, LED indicators, fault detector
Options:	2 cabinets, 18" conveyor

# PRESSURE SEALERS – PRODUCTION



FD 2094



FD 2084 Continuous Feed,  
includes FD 676 Industrial Burster

## FD 2094 / FD 2084 Mid-Volume Production

High-speed folding and sealing of one-piece cut-sheet or continuous mailers. FD 2084 combines the FD 2094 and FD 676 Industrial Burster for in-line processing of continuous forms.

Hopper Capacity: Up to 500 forms 24# (FD 2094)

Variable Speed: Up to 28,000 forms per hour, based on 11" Z-Fold

Paper Size: Up to 3 - 14" W x 5 - 20" L

Duty Cycle: Up to 400,000 per month

Features: Automatic fold settings, six pre-programmed folds, 3 custom folds, variable speed control, 31" sequential stacker, 7-digit resettable counter, safety interlocks, fault detectors, static eliminator

Options: Center slitter kit, bulk loader

Online Demo at [www.formax.com](http://www.formax.com)

## FD 2200-10 Stand-Alone Pressure Sealer

Specially designed for use with various high-production floor model folders. Integrates easily, and can be removed for non-pressure seal applications.

Speed: Fixed speed of 40,000 forms per hour

Paper Size: Up to 11.5" wide

Dimensions: 25" W x 24" L x 38.5" - 39" H

Weight: 180 lbs.

Motor: 1/2 HP AC

Power: 240V, Single Phase

Power Input Connection: 240 Volts

Signal Input Connection: 240 Volts to start relay

Fault Detection Connection: 24 Volt

Features: Precision ground clutching four-roller system, 8-ball transport deck between fold rollers and sealer, three interface connections, safety cover interlock, heavy-duty casters, mounting bracket, fault detection, static eliminator, plexi-cover



FD 2250



FD 2200



FD 2200-EX



FD 2280

## 2200 Series High-Volume Production

Four models are available, each with automatic fold setting adjustments and capacity of up to 40,000 forms per hour and unlimited monthly duty cycle. **FD 2200** air feed, **FD 2200-EX** extended air feed system, **FD 2250** pile-loader in-feed, and **FD 2280** with in-line FD 676 Industrial Burster.

Hopper Capacity: FD 2200 - up to 500 forms 24#  
FD 2200-EX - up to 1,000 forms 24#  
FD 2250 - up to 3,500 forms 24# \*

Variable Speed: Up to 40,000 forms per hour, based on 11" Z-Fold

Paper Size: Up to 11.5" W x 25" L

Duty Cycle: Unlimited

Power: 220V, three phase, 20 Amp (Special 3-phase power required)

Features: Automatic fold settings, extendable output conveyor, jam detection, addition and batch counter, static eliminator, safety interlocks

\*Capacity of up to 3,500 non-windowed forms. Forms with a traditional patch window are better suited for the FD 2200 and FD 2200-EX.

Online Demo at [www.formax.com](http://www.formax.com)

U.S. Patents 5,772,841 5,865,925 5,968,308 6,264,592 Other patents pending.

Formax Inserters automate the tedious task of folding and inserting documents into envelopes. Leading-edge technology provides a flexible, dependable, cost-effective solution for your organization's document and mail flow. Programmable jobs, color touchscreen displays, AutoSet™ one-touch setup, and optional OMR and BCR are all part of the user-friendly interface.



## FD 6102 Low-Volume Desktop Inserter

Feeders:	Up to 100 sheets each (20#)
Envelope Hopper:	Up to 100 envelopes
Fixed Speed:	Up to 1,360 pieces per hour
Duty Cycle:	Up to 5,000 per month
Features:	2 fully-automatic sheet feeders, 1 automatic insert/BRE feeder, fully automatic adjustments, color touchscreen display, 14" sheet capability, 15 programmable jobs, resettable and non-resettable counters, seal and non-seal capabilities, double document detection, adjustable catch tray for #10 and 9.5" envelopes



## 6204 Series Low-Volume Desktop Inserters

Feeders:	Up to 325 sheets each or approximately 45 BREs
Fixed Speed:	Up to 2,200 pieces per hour
Duty Cycle:	Up to 15,000 per month
Features:	Available in 4 configurations, color touchscreen display with job wizard set-up guides, AutoSet™ one-touch set-up, 15 programmable jobs, daily mail station, seal/non-seal and fold-only capabilities, resettable and non-resettable counters, folds/inserts up to 5 sheets
Options:	OMR up to 5 sheets (FD 6204-Adv 2 only), front/rear side exit tray, short feed trays, cabinet, 402 Series Joggers



FD 6206-Advanced 2, with two Document Feeders and BRE/Insert Feeder

## 6206 Series Low-Volume Desktop Inserters

Feeders:	Up to 250 sheets each
Envelope Hopper:	Up to 250 envelopes, top-loading
Fixed Speed:	Up to 2,400 pieces per hour
Duty Cycle:	Up to 20,000 pieces per month
Vertical Output Stacker:	Up to 250 filled envelopes, reverse stacking output
Features:	Available in 4 configurations, color touchscreen, 20 programmable jobs, AutoSet™ one-touch set-up, vertical output stacker, folds/inserts up to 8 sheets, semi-automatic document feeder, BRE feeder holds up to 250 BREs or 700 inserts, automatic water level detection, energy-saving standby mode, seal/non-seal and fold-only capabilities
Options:	OMR, BCR, cabinet, 402 Series Joggers



FD 6304-Standard 2F, with Vertical Output Stacker and High-Capacity Document Feeder

## 6304 Series Mid-Volume Desktop Inserters

Standard Feeders:	Up to 325 sheets each or approximately 45 BREs
High-Capacity Feeder:	Up to 725 sheets, 20# bond
Envelope Hopper:	Up to 325 envelopes, top-loading
Fixed Speed:	Up to 3,600 pieces per hour
Duty Cycle:	Up to 40,000 pieces per month
Vertical Output Stacker:	Up to 500 filled envelopes, reverse stacking output
Features:	Available in 5 configurations, fully-automatic adjustments, color touchscreen control panel, high-capacity vertical stacker, 25 programmable jobs, AutoSet™ one-touch set-up, folds/inserts up to 10 sheets (half-fold) or up to 8 sheets (tri-fold), daily mail station, seal/non-seal and fold-only capabilities, resettable & non-resettable counters
Options:	Production feeder, Advanced OMR & BCR, short feed trays, side exit tray, 402 Series Joggers



6404 Series, with High-Capacity Document Feeder, two optional Short Feed Trays, and High-Capacity Production Feeder

## 6404 Series Mid/High-Volume Modular Desktop Inserters

Feeders:	Up to 325 sheets each or approximately 45 BREs
Envelope Hopper:	Up to 325 envelopes, top loading
Vertical Output Stacker:	Up to 500 filled envelopes, reverse stacking output
Fixed Speed:	Up to 4,000 pieces per hour, #10 envelopes
Duty Cycle:	Up to 60,000 per month
Features:	2, 4 or 6 feeders, high-capacity reverse-output vertical stacker, color touchscreen control panel, AutoSet™ one-touch set-up, 25 programmable jobs, cascade mode, daily mail station, resettable and non-resettable counters, seal/non-seal and fold-only capabilities, folds/inserts up to 10 sheets of paper, capable of inserting top/middle/bottom-address documents into top-flap envelopes, water level alert on control panel
Options:	High-capacity document feeder for up to 725 sheets, 1 or 2 production feeders, BCR and OMR, side exit tray, short feed trays, cabinet, 402 Series Joggers



## INSERTERS - MID/HIGH-VOLUME

### 6604 Series Mid/High-Volume Modular Desktop Inserters

Feeder Capacity:	Up to 325 sheets each or approximately 45 BREs
Envelope Hopper:	Up to 500 envelopes, top loading
Vertical Output Stacker:	Up to 500 filled envelopes, reverse stacking output
Fixed Speed:	Up to 4,300 pieces per hour, #10 envelopes
Duty Cycle:	Up to 80,000 per month
Features:	2 - 7 feeders, adjustable 10.4" color touchscreen control panel, 25 programmable jobs, vertical output stacker, 725-sheet high-capacity document feeder, cascade mode, daily mail mode, AutoSet™ one-touch set-up, seal/non-seal/fold-only capabilities, inserts into envelopes up to 6.4" H x 9.8" W, folds up to 10 sheets, inserts top/middle/bottom address documents, CIS scanning technology
Options:	1 or 2 production feeders, side exit tray for up to 500 filled envelopes, thin booklet feeder for pre-folded documents and booklets, short feed trays, high-capacity envelope hopper, high-capacity output conveyor, various OMR and BCR options, cabinet, feeder add-ons, 402 Series Joggers

### 7100 Series High-Volume Modular Inserter

Feeder Capacity:	Up to 500 sheets 20# paper top tray, 250 sheets lower trays
Envelope Hopper:	Up to 400 envelopes, top-loading
Fixed Speed:	Up to 4,500 per hour, #10 envelopes
Duty Cycle:	Up to 150,000 pieces per month
Features:	Modular design from 1 to 9 feeders, automatic job setup, 20 programmable jobs, cascade mode. <b>Basic 1 &amp; 3 Models:</b> Capable of accommodating top, middle and bottom address positions, dedicated hand-feed station, cascade mode, daily mail mode for inserting stapled sets up to 8 sheets
Options:	Output conveyor, OMR, BCR, cabinets, 402 Series Joggers

### 7200 Series High-Volume Modular Inserter

Tower Feeder	<b>Special 1F:</b> One 1,000-sheet Flex-Feeder
Sheet Capacity:	<b>Special 2:</b> Two 500-sheet Flex-Feeders <b>Special 2F:</b> Two 1,000-sheet Flex-Feeders <b>Special 3F:</b> Two 500-sheet Flex-Feeders on top and one 1,000-sheet Flex-Feeder on bottom <b>Special 4:</b> Four 500-sheet Flex-Feeders
Versatile Feeder	Up to 1,000 sheets 20#
Sheet Capacity (opt):	Up to 250 2.4mm booklets
Envelope Hopper:	Top-loading, up to 800 standard envelopes or 500 flat envelopes (landscape orientation)
Fixed Speed:	Up to 4,800/hour, #10 envelopes
Duty Cycle:	Up to 200,000 pieces per month
Features:	Modular design from 1 to 11 feeders, 15" color touchscreen interface, automatic job setup, inserts into flats (landscape orientation), unlimited programmable jobs, inserts sets of up to 50 sheets, folds up to 8 sheets at once, cascade mode, accumulation/divert deck, high-capacity output conveyor, reads all code types, air assist insertion, daily mail mode, custom cabinets
Options:	High-capacity versatile feeders, intelligent feeders, various OMR and BCR options, data logging software, 402 Series Joggers



6604 Series shown with High-Capacity Document Feeder, optional Thin Booklet Feeder and two Production Feeders



FD 7100-Basic 3 with optional Accumulator

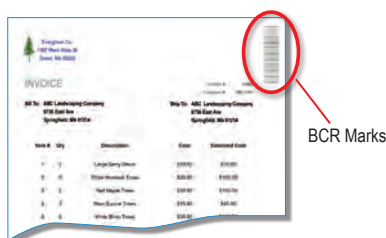


FD 7200-Special 4 with four 500-sheet feeders and custom cabinets

## MailDoc™ DOCUMENT MANAGEMENT SOFTWARE

Online Demo at [www.formax.com](http://www.formax.com)

Formax MailDoc™ is a powerful, easy-to-use software suite that generates Optical Mark Recognition (OMR) or Bar Code Recognition (BCR) marks directly on documents. This provides intelligent inserting of varying multi-page documents such as invoices and statements. MailDoc™ also allows you to fully utilize a Formax inserter equipped with OMR or BCR through enhanced security, target marketing with selective feeding and diverting of sets based on selected criteria. Two versions are available, Beginner and Professional. The optional Postal Module increases savings by running addresses through CASS, PAVE list management software using NCOA for list certification.



Invoices or Statements are simply exported and saved in one PDF file. No integration is needed with your existing accounting software.

Select OMR or BCR mark functions and location of marks. Create templates for each recurring job for quick and efficient processing.

Documents are printed at any speed from MailDoc with OMR or BCR marks ready for intelligent insertion.

Formax inserters provide secure, automated insertion of documents.

# DOCUMENT FOLDERS

Folding documents has never been easier! With a variety of models to choose from, you can automate any size folding job, from entry-level to high production. Formax folders offer feature-rich design and ease of operation. Features include a drop-in feed system, standard and custom folds, various output options, and user-friendly control panels. The FD 38X delivers speeds of up to 20,100 sheets per hour with fully automatic settings.



## FD 312 Office Desktop Folder

Hopper Capacity:	Up to 200 sheets 20#
Fixed Speed:	Up to 150 sheets per minute
Paper Size:	Up to 8.5" W x 14" L
Fold Type:	C, Z, V, custom folds
Features:	Clearly marked fold plates, pre-marked for three popular folds, standard and custom folds, drop-in feed system, quick set-up with push-button operation, compact desktop design
Options:	402 Series Jogger

Online Demo at [www.formax.com](http://www.formax.com)



## FD 320 Tabletop Folder with Manual Fold Settings

Hopper Capacity:	Up to 250 sheets 20#
Variable Speed:	Up to 11,000 sheets per hour
Paper Size:	Up to 11" W x 17" L
Fold Type:	C, Z, V, custom folds
Features:	Drop-in feed system, manual fold settings, custom fold settings
Options:	Cabinet, 402 Series Jogger



## FD 342 Tabletop Folder with Manual Fold Settings

Hopper Capacity:	Up to 500 sheets 20#
Fixed Speed:	Up to 15,500 sheets per hour, based on 11" Z-Fold, 6 Settings
Pre-Marked Folds:	C, V, Z, Gate, Fold Out and Double Parallel
Pre-Marked Paper Sizes:	11", 14", 17"
Paper Size:	Up to 3.5" - 12.25" W x 5" - 18" L
Features:	Six programmed fold settings, telescoping conveyor system, drop-in feed system, 6-digit resettable and 8-digit life counters, batch counter, custom fold settings, fault detection, fine-tune adjustment, quick-release fold stops, adjustable stacker wheels, self-centering side guides, easy-off feed wheel shaft
Options:	Multi-sheet feeder, cabinet, 402 Series Jogger

Online Demo at [www.formax.com](http://www.formax.com)



FD 342 Control Panel



Removable Feed Wheels



Optional Multi-Sheet Feeder



Closed Conveyor

# DOCUMENT FOLDERS



FD 382 / FD 38X Control Panel

## FD 382 Tabletop Folder with Automatic Fold & Form Length Settings

Hopper Capacity:	Up to 500 sheets 20#
Variable Speed:	Up to 20,100 sheets per hour, based on 11" Z-Fold, 6 Settings
Pre-Set Folds:	C, V, Z, Gate, Fold Out and Double Parallel
Custom Folds:	Stores up to 25 custom folds into memory
Pre-Set Paper Sizes:	11", 14", 17"
Paper Size:	Up to 3.5" - 12.25" W x 5" - 18" L
Languages:	English, Spanish, French, German, Italian, Dutch
Features:	LCD control panel, 6 programmed fold settings, telescoping conveyor system, drop-in feed system, 6-digit resettable and 8-digit life counters, AutoBatch, stores up to 25 custom folds, fault detection, fine-tune adjustment, cross folding, quick-release fold stops, adjustable stacker wheels, self-centering side guides, six languages, easy-off feed wheel shaft, thick stock mode, removable roller cover
Options:	Multi-sheet feeder, short fold/small document kit, cabinet, 402 Series Jogger

Online Demo at [www.formax.com](http://www.formax.com)

## FD 38X Tabletop Folder with Fully Automatic Settings

Hopper Capacity:	Up to 500 sheets 20#
Variable Speed:	Up to 20,100 sheets per hour, based on 11" Z-Fold, 6 Settings
Stacker Wheels:	Automatic
Pre-Set Folds:	C, V, Z, Gate, Fold Out and Double Parallel
Custom Folds:	Stores up to 35 custom folds into memory
Pre-Set Paper Sizes:	11", 14", 17"
Paper Size:	Up to 3.5" - 12.25" W x 5" - 18" L
Languages:	English, Spanish, French, German, Italian, Dutch
Features:	Includes all FD 382 features, plus AutoStack™ fully automated stacker wheels, multi-sheet feeder for up to 4 stapled sheets, adjustable feed table pressure for thick and thin stocks, fold plate locks, stores up to 35 custom folds
Options:	Cabinet, 402 Series Jogger

Online Demo at [www.formax.com](http://www.formax.com)

## FD 390 High-Volume Air-Feed Folder

Hopper Capacity:	Up to 350 sheets 20#
Variable Speed:	Up to 35,000 sheets per hour
Paper Size:	Up to 14" W x 20" L
Features:	Bottom air-feed, 5-digit counter, fine-tune adjustment, adjustable side guides and multiple air adjustments, perf/score attachment for 20-28# paper
Options:	Dedicated perf/score attachment for heavy paper stock, 402 Series Jogger. Cross-fold capability with the FD 396 Right-Angle Folder



FD 390 Folder in-line with FD 396 Right-Angle Folder

# COLORMax7 DIGITAL COLOR PRINTER

The ColorMax7 Digital Color Printer uses the latest Memjet® technology to produce full-color CMYK output at three times the speed of traditional shuttle head printers, at one third the per-page cost. The print head has 70,400 ink nozzles and no moving parts, for higher speeds, lower ink and maintenance costs and less noise. With its thermal inkjet technology, the ColorMax7 doesn't require heat or contact to create an image, so it can safely be used with pre-printed envelopes and windowed envelopes without damaging the window or marring the original image.

cmColor RIP & Color Match Software is specially designed to work with the ColorMax7. It utilizes the powerful Harlequin® RIP engine to provide outstanding overall image quality, with predictable and repeatable color standardization. This software-printer combination is ideal for businesses and commercial printers who produce full-bleed color envelopes, marketing materials, invitations and much more.



Powered by  
**memjet**

## ColorMax7 Digital Color Printer

Speed, page printing:	Up to 3,600 per hour
Speed, #10 envelopes:	Up to 7,500 per hour
Duty Cycle:	30 million pieces, or 500,000 per month over a 5-year life cycle
Material Size:	Min: 3" W x 4.25" L Max: 9.5" W x 17" L
Material Thickness:	Up to 1/48" (0.5mm / 430 gsm / 160# cover / 240# index)
Print Quality:	Up to 1600 x 1600 dpi @ 6 inches per second, up to 1600 x 800 dpi @ 12 ips
Print Area:	Up to 8.5" x 17" with full bleed capability
Ink Tank Capacity:	Cyan 250ml, Magenta 250ml, Yellow 250ml, Black 500ml
Color Matrix:	Up to 16.8 million colors
Hardware Required:	Windows-based PC, XP and newer Java 6.0 or newer and Microsoft.NET Framework 3.5 must be installed on PC
PC Interface:	USB & Ethernet
Firmware Update:	Electronic firmware update downloads via PC connection
Fonts:	All available TrueType or Postscript system fonts
Features:	Full-bleed capacity, fixed print head, high-capacity ink tanks, full CMYK color, safe for pre-printed and windowed envelopes, fully-automated print head cleaning
Options:	Conveyor stacker, infrared dryer, cmColor Software, cmEnvelopes

Online Demo at [www.formax.com](http://www.formax.com)

# cmCOLOR RIP & COLOR MATCH SOFTWARE



## cmColor RIP & Color Match Software

Host / Server Computer	3 Ghz Dual/Quad Core, Core i5 recommended, DVD ROM, 3 available USB 2.0 ports, Windows 7 Professional 32- or 64-bit, 4+ GB RAM, 100/1000 Network Interface Card. Formax recommends that the Host / Server Computer be a stand-alone unit, dedicated to use with cmColor and ColorMax7.
Workflow PC Client	2 Ghz Dual Core or higher processor, DVD ROM, 2 GB RAM, 100/1000 Network Interface Card. Clients are available for Windows XP Professional, Windows 2003 Server, Windows Vista Business Professional, Windows 7 Professional 32- and 64-bit. "Home" versions of the operating system are not supported.
Workflow MAC OS X Client	OS X 10.7, OS X 10.8, 2 GB RAM or more
Minimum System Requirements:	

Server requirements vary based on production volume demands and number of client and RIP connections. Recommendations do not include the requirements for other workstation software.





# CUT-TRUE GUILLOTINE CUTTERS

Online Demos at [www.formax.com](http://www.formax.com)

Cut-True Cutters combine ease of use, accuracy and the highest standard of safety. Each features a high-quality hardened steel blade, LED Laser Line for accuracy, and user-friendly controls. The two manual and one semi-automatic models are the ideal solution for transforming brochures, invitations and more with professional, accurate cutting.

Cut-True Cutters



## Cut-True 15M Manual Paper Cutter

Cutting Action:	Manual lever handle
Maximum Cutting Width:	16.9" (430mm)
Maximum Paper Stack Height:	2.15" (55mm)
LED Laser Cut Line:	Yes
Clamp Style:	Spindle-guided clamping wheel
Back Gauge Adjustment:	Manual crank
Back Gauge Reading:	Scale, in both inches (1/32") and metric (1mm)
Blade Change Safety Tool:	Included
Safety Certifications:	CE approved, UL pending
Stand:	Included, as well as feet for tabletop use



## Cut-True 16M Manual Paper Cutter

Cutting Action:	Manual lever handle
Maximum Cutting Width:	18.7" (475mm)
Maximum Paper Stack Height:	3.15" (80mm)
LED Laser Cut Line:	Yes
Clamp Style:	Spindle-guided clamping wheel
Back Gauge Adjustment:	Manual crank
Back Gauge Reading:	Scale, in both inches (1/32") and metric (1mm)
Blade Change Safety Tool:	Included
Safety Certifications:	CE approved, UL pending
Stand:	Included, as well as feet for tabletop use



## Cut-True 22S Semi-Automatic Electric Paper Cutter

Cutting Action:	Dual-button electric
Maximum Cutting Width:	16.9" (430mm)
Maximum Paper Stack Height:	1.75" (45mm)
LED Laser Cut Line:	Yes
Clamp Style:	Spindle-guided clamping wheel
Back Gauge Adjustment:	Manual crank
Back Gauge Reading:	Digital readout, in both inches (1/32") and metric (1mm)
Blade Change Safety Tool:	Included
Power Supply:	110V
Safety Certifications:	CE approved, UL pending
Stand:	Included, as well as feet for tabletop use

## CARD CUTTERS

Online Demos at [www.formax.com](http://www.formax.com)

Formax Card Cutters easily produce full-bleed business cards, postcards, greeting cards, spec sheets and photos. The FD 120 can be used right from your desktop. The FD 125 processes a wide range of paper sizes, up to 13" x 19" and includes an all-metal stand on casters for portability, and to conveniently store and conceal the waste bin.



### FD 120 Card Cutter

Hopper Capacity:	Up to 75 sheets
Variable Speed:	Up to 130 business cards per minute
Paper Size:	8.5" W x 11" and 8.5" W x 14" L
Paper Weight:	120 - 350 gsm
Features:	Cuts full-bleed color business cards, postcards, greeting cards and photos. User-friendly control panel with LCD display, 6 programmed jobs, 6 custom jobs, paper weight adjustment for heavier stock, fine-tune adjustment
Options:	7" slitter cassette for postcards and photos, 8" slitter cassette for greeting cards, 402 Series Jogger



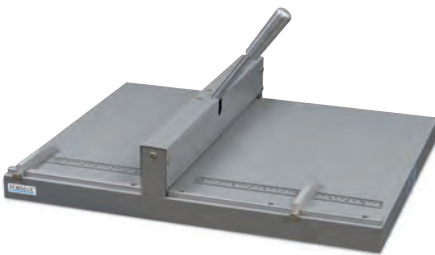
Shown with optional Conveyor Stacker

### FD 125 Card Cutter

Hopper Capacity:	Up to 2" or 120 sheets (300gsm)
Variable Speed:	Up to 240 business cards per minute (12" x 18" sheets)
Cutting Tolerance:	+/- 0.2 mm
Paper Size:	Letter,* Legal,* 11" x 17", 12" x 18", 13" x 19" (Letter and Legal size applications require custom slitter cassette FD 125-40)
Paper Weight:	120 - 350 gsm
Minimum Finished Length:	1.2" (30mm)
Output Stacker Capacity:	Up to 750 business cards
Power Supply:	110V/220V, 50/60Hz, 1.2A
Features:	Cuts full-bleed color business cards, postcards, spec sheets, greeting cards and photos. User-friendly control panel with LCD display, 7 programmed / 6 custom jobs, paper weight adjustment for heavier stock, fine-tune adjustment, all-metal stand on casters doubles as hidden waste bin compartment, easily interchangeable optional slitter cassettes
Options:	15" conveyor stacker, 11", 5" and custom slitter cassettes, 402 Series Jogger

## CREASERS

Creasers help prevent tearing and cracking in toner-based digital printouts, providing a clean professional look, and allowing folding machines to fold with greater accuracy. Each model is simple to use; simply adjust the paper stops, load paper, crease and it's done.



### FD 210M Manual Paper Creaser

Creasing process:	Manual lever press
Maximum paper width:	Up to 18" (460mm)
Minimum paper size:	3.5" (89mm)
Maximum paper weight:	Up to 14 pt cover
Minimum paper stop position:	1" (25mm)
Maximum paper stop position:	13" (330mm)
Width of crease:	.05" (1.3mm)
Depth of crease:	.015" (.4mm)



**FD 210M:**

Press down with creasing handle



**FD 215S:** Choose either push-button or foot-pedal operation

### FD 215S Electric Paper Creaser

Creasing process:	Electric, hands-free foot pedal
Maximum paper width:	Up to 18" (460mm)
Minimum paper size:	5.75" (146mm)
Maximum paper weight:	Up to 18 pt cover
Minimum paper stop position:	1.8" (46mm)
Maximum paper stop position:	14.75" (375mm)
Width of crease:	.062" (1.6mm)
Depth of crease:	.019" (.5mm)
Power:	110V, 60Hz, 120W
Safety Certifications:	CE Approved



Sheet is creased and ready for crack-free folding

## DOCUMENT SIGNER

Document Signers are ideal for signing or endorsing checks or imprinting seals. The FD 150 features dual locks for security and a resettable and non-resettable counter for maximum audit control.



### FD 150 Cut-Sheet Document Signer

Hopper Capacity:	Up to 200 sheets 20#
Fixed Speed:	Up to 300 pieces per minute
Paper Size:	2.75" - 14" W x 3" - 14" L
Features:	Dual key locks, resettable and non-resettable counter, four programmable jobs
Options:	Tri-color and ultraviolet ink roll, 402 Series Jogger

## CUT-SHEET BURSTERS & CUTTER

The 4000 Series Bursters and FD 572 Cutter are ideal finishing solutions for multiple forms printed on a single page. The 4000 Series provides high and low-volume options for bursting multiple documents on pre-perforated forms. The FD 572 Cutter produces crisp, clean edges when cutting similar cut-sheet forms without perforations. These solutions are ideal for checks, coupons, tickets, notices, membership cards and labels.



### FD 4170 Cut-Sheet Burster

Hopper Capacity:	Up to 400 sheets 20#
Variable Speed:	5-level speed adjustment: 42, 64, 89, 114, 140 sheets per minute
Paper Size:	4" - 11" W x 5" - 17" L
Paper Weight:	13# bond - 110# index
Features:	4-digit LCD counter, three-tire top-loading system, programmable job settings, pre-programmed cut settings for 11", 14" and 17" paper, adjustable side guides for different form lengths, last job memory
Options:	402 Series Jogger

Online Demo at [www.formax.com](http://www.formax.com)



### FD 4400 Cut-Sheet Burster

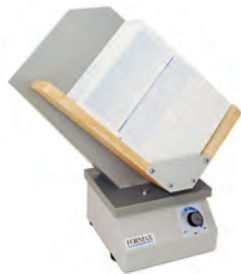
Hopper Capacity:	Up to 500 sheets 20# (bottom air-feed)
Variable Speed:	Up to 30,000 sheets per hour (input - 11" sheet)
Paper Size:	2.75" - 17" W x 2.75" - 17" L
Features:	Industrial strength, air-feed system, continuous loading, conveyor with photo-eye, safety interlocks
Options:	Drop stacker, 402 Series Jogger



### FD 574 Cut-Sheet Cutter

Hopper Capacity:	Up to 500 sheets 64gsm
Variable Speed:	Up to 2,640 sheets per hour (1 or 2 cuts - 11" sheet)
Paper Size:	4" - 14.5" W x 4" - 18" L
Features:	Guillotine cutter, 100 programmable custom settings, six pre-programmed settings, counter, safety interlocks, top-loading feed system
Options:	Slitters, perforators, conveyor, 402 Series Jogger

Virtually any piece of equipment which processes cut-sheet paper, forms or envelopes can be enhanced by using a 402 Series Jogger. Each has the ability to align and separate forms, paper, or envelopes for accurate feeding, while reducing heat and static electricity caused by laser printers.



## FD 402P1 Single-Bin Paper Jogger

Variable Speed:	Up to 4,000 vibrations per minute
Bin Capacity:	Up to 800 sheets 20#
Bin Size:	3.5" D x 8.75" W x 15.5" L
Media Size:	Up to 11" W x 17" L
Features:	Single bin with center divider for improved small stack jogging, tilted rack, variable speed, solid state control for on/off/vibration speed, electromagnetic design for continuous operation



## FD 402P3 Three-Bin Paper Jogger

Variable Speed:	Up to 4,000 vibrations per minute
Bin Capacity:	Up to 1,700 sheets 20#
Bin Size:	7" D x 2.25" W x 11.25" L each bin
Media Size:	Up to 8.5" W x 14" L
Features:	Three bins for high-volume applications, tilted rack, variable speed, solid state control for on/off/vibration speed, designed for continuous operation



## FD 402E2 Two-Bin Envelope Jogger

Variable Speed:	Up to 4,000 vibrations per minute
Bin Capacity:	Up to 1,750 sheets 20#
Bin Size:	2.5" D x 3.5" W x 10" L each bin
Media Size:	Up to 4" W x 9.5" L
Features:	Two bins for preparing incoming mail, aligning checks or statement stubs for further processing, tilted rack, variable speed, solid state control for on/off/vibration speed, electromagnetic design for continuous operation



## FD 402TA1 Tabletop Air Jogger

Variable Speed:	Up to 2,500 vibrations per minute
Bin Capacity:	Up to 940 sheets 20#
Bin Size:	3.75" D x 20.375" W
Media Size:	5" x 7" min - 12" x 18" max
Variable Air Control:	Up to 29,000 rpm
Features:	Tilting V-shaped bin adjusts from horizontal to vertical, accommodates large format and crisscross stacked piles, three operating modes: air-and-vibrate, air-only, and vibrate-only



## FD 404A1 High-Capacity Air Jogger

Variable Speed:	Up to 3,000 vibrations per minute
Bin Capacity:	Up to 940 sheets 20#
Bin Size:	3.75" D x 20.375" W x 13" L
Media Size:	5" x 7" min - 12" x 18" max
Variable Air Control:	Up to 29,000 rpm
Features:	Tilting V-shaped bin adjusts from horizontal to vertical, foot pedal control for two-handed loading and unloading, accommodates large format and crisscross stacked piles, 60-second countdown timer for unattended jogging, three operating modes: air-and-vibrate, air-only, and vibrate-only



## TABBING SYSTEMS

Formax Tabbing Systems include the FD 260, which uses “crash tab” technology to apply postal tabs to folded mail pieces. The FD 280 system applies multiple edge tabs per piece, up to 3 per pass. The FD 290 system combines the FD 280 and FD 260 for one-pass tabbing of booklets and more, applying edge and top tabs in a single pass.



FD 260 Tabber, shown with optional feeder and conveyor



FD 280 Tabber, shown with optional heavy duty feeder and adjustable stand



FD 290 Tabber, shown with optional heavy duty feeder and conveyor

### FD 260 Single-Head Crash Tabber

Speed:	Tabs up to 15,000 pieces per hour	
Tabs Applied:	1 tab per pass	
Document Sizes:	5" - 12" W	
Document Thickness:	Up to 1/4" thick, coated or uncoated	
Tab Varieties:	1" and 1.5" tabs, clear, translucent or paper, circles or rectangles, on rolls with or without tractor holes	
Tab Roll Capacity:	Up to 5,000 1" tabs, up to 5,000 1.5" tabs	
Tab Spool:	Maximum roll diameter: 8.25"	Core diameter: 3"
Features:	Built-in waste take-up spool	
Options:	Feeder, conveyor, catch tray	

Online Demo at [www.formax.com](http://www.formax.com)

### FD 280 Double-Head Edge Tabber

Speed:	Tabs up to 15,000 pieces per hour	
Tabs Applied:	Up to 3 tabs per pass	
Document Sizes:	3.5" - 9" H x 5.5" - 12" W	
Document Thickness:	Up to .2" thick	
Tab Varieties:	1" and 1.5" tabs, clear, translucent or paper, circles or rectangles, on rolls with or without tractor holes, high-volume fan folded	
Features:	Built-in waste take-up spool	
Options:	Heavy-duty feeder, high-volume tab delivery module, conveyor, adjustable-height cart	

Online Demo at [www.formax.com](http://www.formax.com)

### FD 290 Crash and Edge 90-Degree One-Pass Tabber

Speed:	Tabs up to 15,000 pieces per hour	
Tabs Applied:	Up to 3 tabs per pass	
Document Sizes:	5" - 12" W	
Document Thickness:	Up to 1/4" thick, coated or uncoated	
Tab Varieties:	1" and 1.5" tabs, clear, translucent or paper, circles or rectangles, on rolls with or without tractor holes	
Tab Type/Capacity:	FD 280: Fan folded or high-volume rolls FD 260: Roll up to 5,000 1" tabs, roll up to 5,000 1.5" tabs	
Tab Roll Capacity:	Up to 5,000 1" tabs, up to 5,000 1.5" tabs	
Tab Spool:	Maximum roll diameter: 8.25"	Core diameter: 3"
Features:	Built-in waste take-up spool	
Options:	Heavy-duty feeder, high-volume tab delivery module, conveyor, catch tray, adjustable-height cart	

## ENVELOPE OPENER

The FD 452 Envelope Opener automates the tedious task of opening incoming mail by slitting one side of the envelope, leaving the contents undamaged, without messy paper scraps to clean up. A variety of envelope sizes can be processed at once without pre-sorting.



### FD 452 Envelope Opener

Online Demo at [www.formax.com](http://www.formax.com)

Fixed Speed:	Up to 300 envelopes per minute
Envelope Size:	5.5" - 13" H x 3.5" - 10.2" W
Envelope Thickness:	Up to 4 mm
Catch Tray Capacity:	Up to 80 #10 envelopes
Features:	Chadless cutting, handles mixed mail without pre-sorting, support arm for large envelopes, counter
Options:	402 Series Envelope Jogger

## BOOKLET MAKERS

Online Demos at [www.formax.com](http://www.formax.com)

Creating professional-quality booklets has never been easier than with Formax Booklet Makers. Compact, portable and easy to use, they accommodate a variety of paper sizes, folding and stapling up to 500 booklets per hour.



### FD 160 Tabletop Booklet Maker

Sheet Capacity:	Staples and folds up to 12 sheets of 20# bond, for 48-page booklets
Sheet Size:	10.25" - 18.5" L x 7.75" - 11.75" W
Speed:	Up to 420 booklets per hour (operator-dependent)
Features:	Self-centering adjustable side guides, two staplers with four stapling positions, motorized rollers to fold and eject completed booklets, staple-and-fold and staple-only modes, heavy-duty steel construction



### FD 180 Automatic Tabletop Booklet Maker

Sheet Capacity:	Staples and folds up to 15 sheets of 20# bond, for 60-page booklets
Sheet Size:	10" - 17" L x 8.25" - 12" W
Speed:	Up to 500 booklets per hour (operator-dependent)
Features:	Automatic push-button operation, six pre-set paper sizes and six programmable sizes, LCD control panel display, two automatic staplers with five stapling positions, four-digit counter, automatic paper alignment, safety interlocks, time delay feature for cycle start, heavy-duty steel construction

## BURSTERS

Formax bursters make easy work of separating single or multi-part continuous forms. From low-volume to high-volume industrial needs, the Formax burster line can accommodate a wide variety of single or multi-part bursting applications at speeds of up to 500 feet per minute.



FD 550

### FD 550 Low-Volume Burster

Variable Speed:	0 - 200 ft per minute
Paper Size:	2.375" - 16" W x 2.75" - 12" L
Features:	Tractors, slitters, safety interlocks, conveyor, cabinet
Options:	Center slitter, power drop stacker, and other custom options



FD 668

### FD 666 & FD 668 Mid-Volume Bursters

Variable Speed:	30 - 350 ft per minute
Paper Size:	2.375" - 16" W x 2.75" - 17" L
Features:	Tractors, slitters, cabinet, safety interlocks, conveyor
Options:	Imprinter, power drop stacker, 17" form length, and other custom options



FD 680

### FD 676 & FD 680 High-Volume Bursters

Variable Speed:	30 - 500 ft per minute
Paper Size:	2.75" - 17" (19.25" slitting) W x 2.75" - 17" L
Features:	Tractors, slitters, cabinet, safety interlocks, conveyor
Options:	Imprinter (standard on FD 680), power drop stacker, merger and other custom options

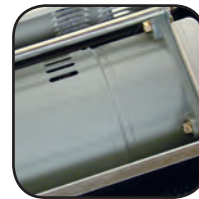
## COMMERCIAL-GRADE SHREDDERS

Formax offers a complete line of shredders with commercial-grade components and features.

Deskside, office, high security, multimedia and industrial models provide a range of options to fit any need or budget.

Standard features include all-metal gears, powerful AC geared motors, user-friendly digital control panels, lifetime guaranteed high-density plastic waste bins, heat-treated precision-ground cutting blades and a variety of safety features.

From sensitive paperwork and CDs to entire files and 3-ring binders, Formax commercial-grade shredders have the power to tackle it all.



- 23 models available: Deskside, Office, High-Security, Multimedia, Industrial
- Strip-cut and cross-cut in a variety of shred sizes
- High-security models comply with NSA/CSS Level 6 requirements
- Lifetime limited warranty on cutting heads (1-year on High Security models)



See the Formax Shredder Catalog or visit [www.formax.com](http://www.formax.com) for complete specifications, features and options

## INSIDE FORMAX

Founded in 1987, Formax is an industry leader in the design, engineering, sales and support of pressure seal, mailing, digital print & finishing and data destruction equipment. Formax specializes in equipment to streamline paper and mail flow in organizations of all sizes and vertical markets, from Fortune 500 companies to schools and municipalities.

Formax markets a wide range of products including AutoSeal® pressure sealers to process one-piece mailers, inserters, paper folders and commercial-grade shredders, as well as an array of complementary products including MailDoc™ software, the ColorMax7 Digital Color Printer and cmColor Software, Cut-True Cutters, bursters, signers, envelope openers, booklet makers, joggers and tabbing systems. The Formax product line is proudly offered through a dealer network across the United States and around the world.



Dover, NH Facility



13 Fairfield Avenue  
Suite 203  
Little Falls, NJ 07424  
tel (973) 638-1720  
fax (973) 638-1724

[www.spectrum-plus.com](http://www.spectrum-plus.com)

# FORMAX®

[www.formax.com](http://www.formax.com)

**Corporate Office, Sales & Service**  
Dover, New Hampshire • USA

**Manufacturing Facility**  
Turlock, California • USA

July 2013